



PLANTEC

Corporate Profile

2024 04 English

We are an organization with the expertise
in the fields of architecture, consulting and creative design.

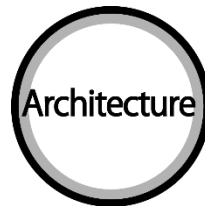
Mission

We ordinarily achieve the extraordinary.

Together with clients, communities and partners,
we create groundbreaking spaces and experiences for a better life and society.

PLANTEC

Plantec's strength comes from the wide variety of expertise covering building design, facility management, business consulting, advisory services and more. Plantec provides not only "design" but also "solutions" that are customized to fit each client's needs.



Goal setting
Preliminary research

Business plan

Asset strategy

Basic plan

Basic design
Design development

Procurement support

Construction
supervision

Promotion

Operation improvement

Maintenance and
management support

Business strategy
Real estate strategy

Planning and Design

Branding
Operational support

Main business partners of major projects from the past and those undertaken over the last two years (in alphabetical order)

Main Clients

Manufacturing

【Automotive products】

Aoyama Seisakusho Co., Ltd.
Kotobukiya Fronte Co., Ltd.
Maruwa Electronic & Chemistry Co., Ltd.
N.E. CHEMCAT CORPORATION
Nipro Pharma Corporation
NSK-Warner K.K.
Primearth EV Energy Co., Ltd.
STANLEY ELECTRIC CO., LTD.
Sumitomo Riko Company Limited
Toyo Tire Corporation
Yorozu Corporation

【Mechanical / Electronic parts / Optical equipment】

AMADA CO., LTD.
KCM Corporation
MODEC, Inc.
Okuma Corporation
ORIENTAL MOTOR CO., LTD.
Panasonic Energy Co., Ltd.
Shinpo Co., Ltd.
SUMITOMO CONSTRUCTION MACHINERY CO., LTD.
Yamato Scientific Co., Ltd.
YASKAWA Electric Corporation

【Pharmaceuticals / Cosmetics】

Astellas Pharma Inc.
Bushu Pharmaceuticals Ltd.
Chugai Pharmaceutical Co., Ltd.
CMIC CMO Co., Ltd.
Kao Corporation
Noevir Co., Ltd.
Takeda Pharmaceutical Company Limited

【Foods】

Calbee, Inc.
J-OIL MILLS, INC.
Kikkoman Corporation
Nichirei Corporation
Sapporo Breweries Limited

【Steel / Metal / Non-metal products】

Furuya Metal Co.,Ltd.
Kawakin Core-Tech Co.,Ltd.

【Chemical / Fiber / Rubber】

ENEOS Corporation
Nitto Denko Corporation

【Building Materials / Household Goods / Others】

ASAHI WOODTEC CORPORATION
Hanamura co.,Ltd.
Konoshima Chemical Co.,Ltd.
LIXIL Corporation
Takagi Co.,Ltd.

Wholesale / Retail / Service

AS ONE Corporation
Starbucks Corporation
Toyota Tsusho Corporation
YANASE & CO.,LTD.
DOME Corporation
Belluna Co., Ltd.
Takashimaya Company, Limited
Ryosan Company,Limited

Education / Research / Technical Services

Angel Academy, Inc.
Hankyu Sekkei Consultant
Hosei University
NUC Osaka University
Rikkyo Educational Corporation
Tokyo Metropolitan Foundation for History and Culture

Medica

Fujita Academy
Medical Corporation Keiseikai
Sakurabashi Watanabe Hospital

Real estate

AEON MALL Co., Ltd.
Chuo-Nittochi Group Co., Ltd.
DAIKYO INCORPORATED
DAIWA HOUSE INDUSTRY CO., LTD.
GLP Japan Inc.
Hankyu Hanshin Properties Corp.
ITOCHU Property Development, Ltd.
JR West Real Estate & Development Company
JR West Urban Development Co., Ltd.
Kanazawa Terminal Development Co., Ltd.
Kintetsu Real Estate Co.,Ltd.
Kobe Future City Co.,Ltd.
kumoji Development Co.,Ltd. Corporation
MIKUNI co.,Ltd.
MORI TRUST CO., LTD.
Nomura Real Estate Development Co., Ltd.
NTT Urban Development Corporation
SOTETSU Urban Creates co.,LTD
Tokyo Tatemono Co., Ltd.
TOKYU LAND CORPORATION
Toshin Development Co., Ltd.
TOYOTA SMILE LIFE INC.
World iCity Co., Ltd.
Yasuda Real Estate Co.,Ltd.

Finance / Investment

Angelo, Gordon
Credit Saison Co., Ltd.
Daiwa Office Investment Corporation
Daiwa Securities Realty Co.Ltd.
Fortress Investment Group (Japan) GK
Fukuoka Financial Group, Inc.
The Bank of Iwate, Ltd.
The Iyo Bank, Ltd.

Transportation / Logistics

WEST JAPAN JR BUS COMPANY
JAPAN POST TRANSPORT Co.,Ltd.
Prologis, Inc.
Tokyo Monorail Co., Ltd.
FUJII KYUKO CO., LTD
HANSHIN ELECTRIC RAILWAY CO.,LTD.

Telecommunications

Net One Systems Co., Ltd.
KAGOYA Holdings inc.
QTnet, Inc.
Bunkyosha Co., Ltd.

Construction

DAI-DAN CO., LTD.
EXEO Group, Inc.
Takamatsu Construction Group Co., Ltd.

Government office • IAA

JICA
TMG Bureau of Citizens, Culture and Sports
TMG Bureau of Finance

Location

Plantec provides high-quality services to Japanese and international clients from the branch offices located in Osaka, Nagoya, Sapporo, Sendai, Fukuoka, Ho Chi Minh City, Hanoi and Bangkok.



- **Overseas project**
Italy, France, Slovakia, Hungary, Russia, Turkey, China, Hong Kong, Korea, Taiwan, India, Myanmar, Thailand, Vietnam, Cambodia, Singapore, Philippines, Malaysia, Indonesia, America, Mexico, Brazil

We offer 9 primary services related to building design.

We provide a customized solution (singular or combined services) based on the characteristics of each project.

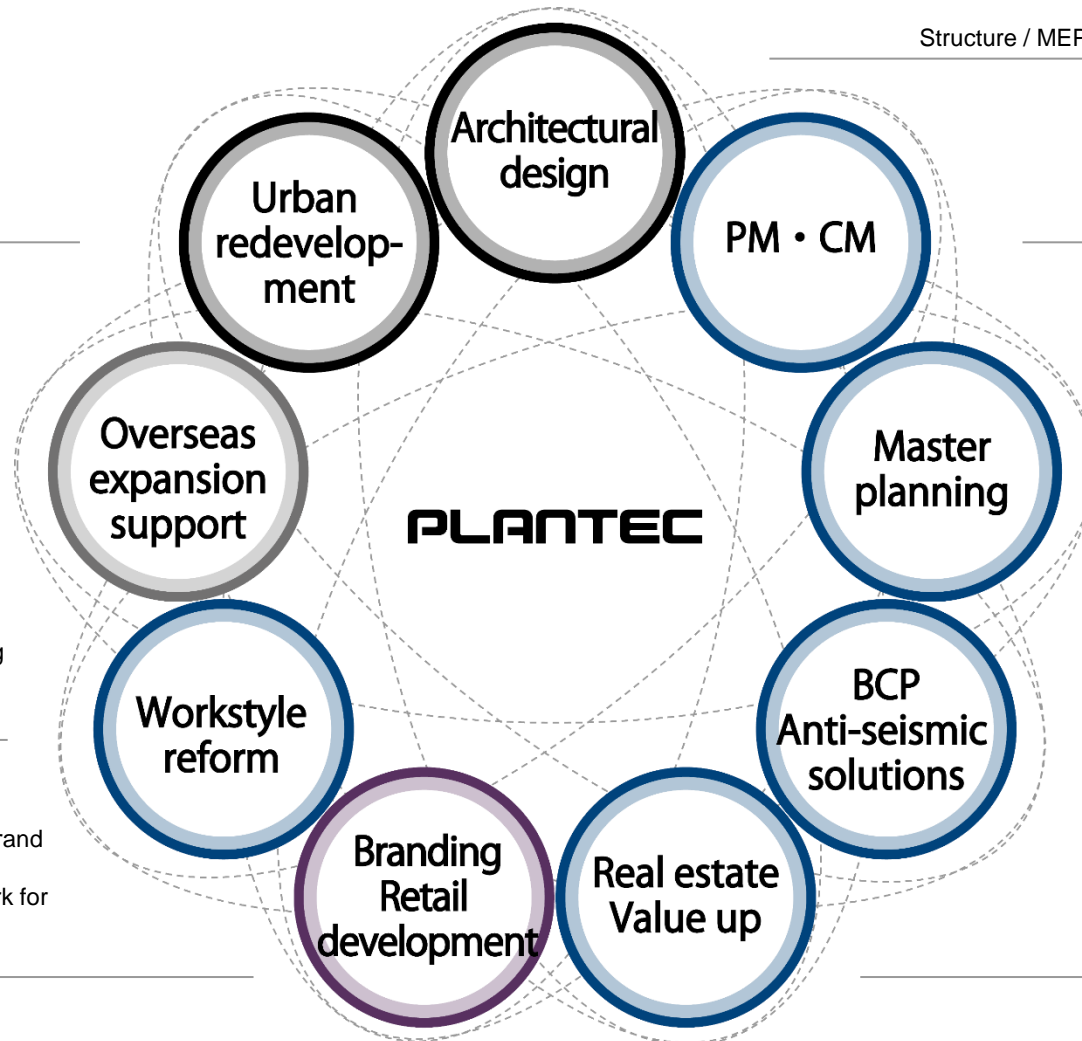
Solution x Design
Structure / MEP / Interior design / Feasibility studies

Project management
Construction management

Total optimization solutions
Restructuring manufacturing bases

Risk management
Energy management

Renewal / Renovation / Conversion



Capitalizing on the city's potential

Japanese quality construction supervision

Workplace and workstyle planning
Optimization of work processes
DX introduction support

Creating a framework for a new brand development
Creating a standardized framework for multiple projects
CG / Movie / Website design

Sustainable next-generation office in harmony with the community and nature

Dai-Dan Hokuriku Branch

Reconstruction project as a resilient response to aging buildings in Kanazawa, a city with a traditional townscape

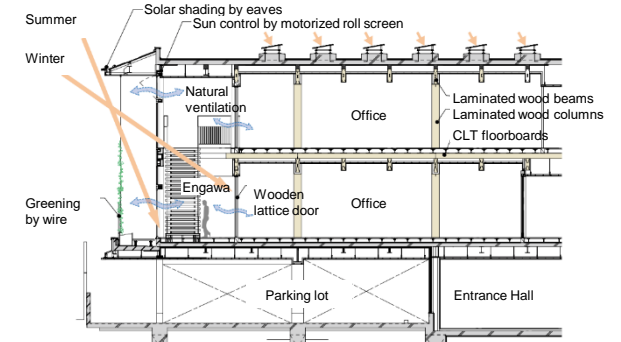
| Office



Location: Kanazawa City, Ishikawa
Completion: April 2022
Floors: 3 above ground
Structure: Steel, partially wooden
Site area: 531m²
Building area: 427m²
Total floor area: 995m²

Facade (evening mode)

Efforts to Contribute to a Sustainable Society



North-south cross section, scale 1:200

Introducing technologies that contribute to decarbonization, better working environment, and resilience. The building achieved ZEB Ready through the use of CLT and laminated wood for part of the structure to reduce CO₂ emissions during construction as well as effective energy management and has also acquired the CASBEE SWO (Smart Wellness Office) S rank, contributing to a sustainable society.

▶ **ZEB Ready & CASBEE SWO
acquisition achieved**



Consideration for traditional townscape

Facing Hyakumangoku Street and close to the Preservation District for Groups of Traditional Buildings, the exterior was planned to inherit the local character.

- The height of the building was kept low.
- Low brightness and saturation of exterior materials
- Finishing materials with texture were used.

When night falls, the lighting is controlled in phases to create an atmosphere of the traditional soft light of "andon".

▶ **Exterior design compatible with Kanazawa's
urban landscape**



Facade (midnight mode)

Construction of contemporary Engawa, a veranda space



Engawa (2nd floor)

The Engawa is reinterpreted as a space that performs modern functions, such as using natural energy and natural ventilation to address global warming and climate change, and to reduce environmental impact. A vaulted porch around the perimeter of the office reduces the heat load in the rooms and contributes to more active staff communication as a comfortable space with natural ventilation. The workspace is designed to accommodate "activity-based working".

▶ **Creating a comfortable working environment in
harmony with nature**

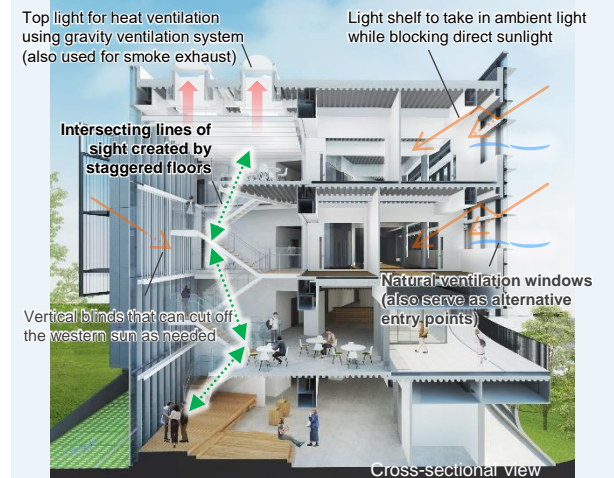
PJ2022

First ZEB certification for a research building of a national university

National University Corporation Osaka University, Pharmacy Building No.4

Project funded by donations to commemorate the 90th anniversary of Osaka University and the 100th anniversary of Osaka University of Foreign Studies.

| Education



Inducing cross-innovation

The concept is a future-oriented space where knowledge and encounters merge and create new innovations. The laboratories on the 3rd and 4th floors are designed with the flexibility to accommodate everything from open laboratories to special laboratories.

- ▶ **Enhancing intellectual productivity by stimulating interaction**
- ▶ **Creation of a highly flexible and functional space**

Exterior design in harmony with the external environment

The east facade of the building is clad with a curtain wall to add transparency to the exterior design along with a clear impression of the building configuration. The west side with a mechanical balcony is covered with perforated folded panels to block the western sun while concealing the view from the residential area. Part of the west facade is a transparent atrium space designed to embrace a preserved camphor tree.

- ▶ **Clear building composition with glass facade**
- ▶ **Consideration for the neighborhood and surrounding area**

Promotion of environmental friendliness and energy conservation

Low-E double-glazing glass was used to reduce the impact from the exterior skin. Energy consumption was reduced by 51% according to the BELS by actively adopting energy-saving methods, such as selecting high-efficiency air conditioners, LED lighting, and lighting controls. In October 2021, the building was certified as ZEB Ready, which means that the annual primary energy balance consumed by the building is close to zero.

- ▶ **ZEB Ready certification was achieved**



YASKAWA Technology Center (YTC)

| R&D



Location: Kitakyushu city, Fukuoka
 Completion: January 2021
 Floors: 4 above ground
 Structure: Steel
 Site area: 107,411 m²
 Building area: 12,734 m²
 Total floor area: 25,458 m²

YASKAWA

Yaskawa Group x Open Innovation

Technology hub for rapid development of the best products

Development
process
integration

Knowledge
aggregation and
creation

Creation of
innovative
technology

PLANTEC Solution

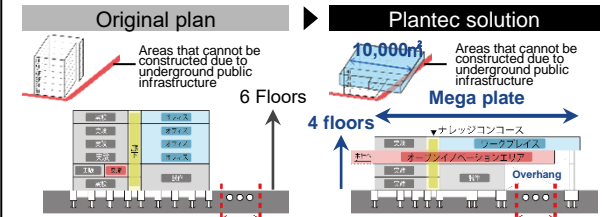
- Design and supervision
- Workplace consulting
- FFE support
- Exhibition planning and production
- Construction *

* Shimizu & Plantec Specified Construction Community (as a joint management community)

Mega plate

To maximize floor space while following the site's legal constraints, we designed an overhanging structure, a mega plate, housing all research-related programs, above the unbuildable area.

▶ Realizing an ideal environment for innovation



Workplace

The office space is organized with flexible modules instead of fixed walls to increase spatial adaptability for various types of research, workflows and workstyles.

▶ Promoting rapid decision-making and integrated development

Knowledge concourse

The concourse located in the center of each floor provides visualized information such as project status, benchmarks and objectives. It acts as a place for chance encounters and interactions between departments.

▶ Communal space that connects ideas between researchers

Open innovation area

The Innovation Hall is a space for exhibitions that effectively convey YTC's philosophy, history, and technologies, and a place to promote new collaborative projects with business partners.

▶ Strengthening internal and external collaborations and development efforts

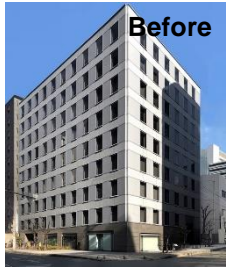
EDGE Series

A sustainable business model improves profitability by renewing the image with a limited budget.

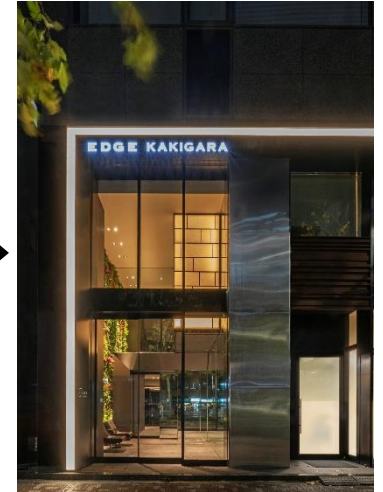
| Office

EDGE Yodoyabashi

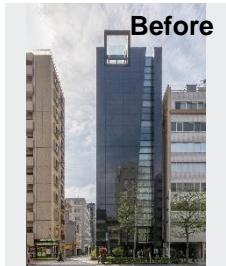
Location: Osaka city, Osaka
 Floors: 10 aboveground
 1 belowground
 Structure: SRC
 Completion: 1989
 Renewal: June 2021
 Total floor area: 7,282m²

**EDGE Nihonbashil Kakigaracho**

Location: Chuo ku, Tokyo
 Floors: 10 aboveground, 1 belowground
 Structure: SRC
 Completion: 1990
 Renewal: September 2021
 Total floor area: 1,925.41m²

**EDGE Suitengu**

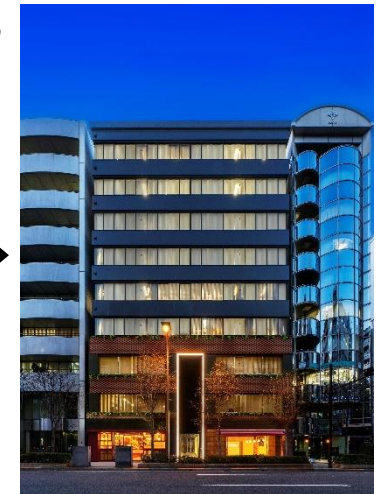
Location: Chuo ku, Tokyo
 Floors: 10 aboveground
 1 belowground
 Structure: SRC
 Completion: 1990
 Renewal: September 2021
 Total floor area: 4,399.77m²

**EDGE Shiba 4**

Location: Minato ku, Tokyo
 Floors: 10 aboveground
 1 belowground
 Structure: RC
 Completion: 1988
 Renewal: February 2021
 Total floor area: 5,569.59m²

**EDGE Kodemacho**

Location: Chuo ku, Tokyo
 Floors: 9 aboveground
 1 belowground
 Structure: SRC
 Completion: 1983
 Renewal: January 2021
 Total floor area: 4,759.67m²



Architectural design

Solution × Design

Laboratory

Takeda Shonan R&D



45th SDA Award
2011 IEIJ Good Lighting Award
2012 JIA Architects of the Year
54th BCS Prize

Location: Fujisawa city, Kanagawa
Completion: 2011
Total floor area: 310,474 m²

TOYOTA MOTOR Powertrain Joint Development Facility



Location: Toyota city, Aichi
Completion: 2013
Total floor area: 100,000 m²

Nissan Global Design Center



Location: Atsugi city, Kanagawa
Completion: 2006

ARKRAY Kyoto Laboratory



2012 JIA Architects of the Year

Location: Kyoto city, Kyoto
Completion: 2010
Total floor area: 16,743m²

LIXIL Housing Technology R&D Center



Location: Noda city, Chiba
Completion: 2017
Total floor area: 4,400 m²

Office

Sony City



2007 Prizes of the Japan Society of Seismic Isolation
41st SDA Award
2007 Good Design Award
2007 JIA Architects of the Year
2008 IIDA Merit Award
7th Ecobuild Award
Air Conditioning Sanitary Engineering Society 47th Society Award
Technology Award

Location: Minato ku, Tokyo
Completion: 2006
Total floor area: 162,887 m²

FRAME NIHONBASHI



Location: Chuo ku, Tokyo
Completion: 2020
Total floor area: 4,706 m²

Credit Saison Ubiquitous



2008 AJJ Selected Architectural Designs
Location: Nakano ku, Tokyo
Completion: 2004

TERAL Head Office



Location: Fukuyama city, Hiroshima
Completion: 2018
Total floor area: 3,001 m²

Air Conditioning Sanitary Engineering Society 35th Promotion Award Technology Promotion Award "Reduced primary energy consumption by 78% and realized "Nearly ZEB"

Moranbong Head Office



Location: Fuchu city, Tokyo
Completion: 2018
Total floor area: 3,761 m²

Factory

STANLEY ELECTRIC Hamamatsu Factory



Location: Hamamatsu city, Shizuoka
Completion: 2004
Total floor area: 24,033m²

Maruwa Electronic & Chemical Main Factory



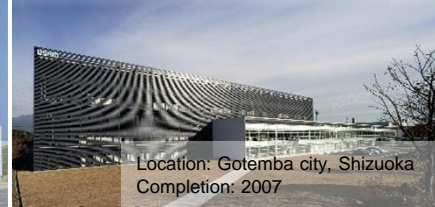
Location: Toyota city, Aichi
Completion: 2013年
Total floor area: 16,695m²

Kowa Company Fuji Factory Canteen



Location: Fuji city, Shizuoka
Completion: 2005

Ushio Gotemba Division



Location: Gotemba city, Shizuoka
Completion: 2007

Fuji Precision Toyokawa Factory



Location: Toyokawa city, Aichi
Completion: 2017
Total floor area: 5,595m²

Logistics

Yamato Transport Osaka Main Branch



Location: Osaka city, Osaka
Completion: 2007
Total floor area: 58,636 m²

Kowa Company Toubu Logistics Center



Location: Kazo city, Saitama
Completion: 2012

STANLEY ELECTRIC Okazaki Factory



Location: Okazaki shi, Aichi
Completion: 2012
Total floor area: 13,671m²

Data Center / Warehouse

QTnet Service Operations Center



Completion: 2015年

The Sumitomo Warehouse Hanyu Archives Center 2



Location: Hanyu city, Saitama
Completion: 2012
Total floor area: 24,380m²

Architectural design

Solution x Design

Commercial

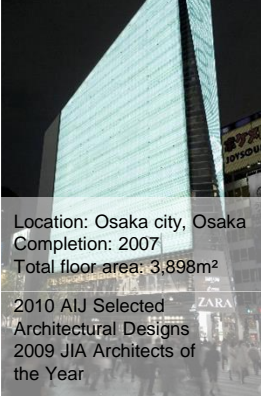
Tamagawa Takashimaya S.C. South Building



Location: Setagaya ku, Tokyo
Completion: 2003
Total floor area: 28,356m²

2007 Good Design Award

La Porte Shinsaibashi



Location: Osaka city, Osaka
Completion: 2007
Total floor area: 3,898m²
2010 AIJ Selected Architectural Designs
2009 JIA Architects of the Year

BRANCH Sendai



Location: Sendai city, Miyagi
Completion: 2018/2019
Total floor area: 5,230m² /16,131m²

2020 Good Design Award

Interior

Ishikawa Hyakumangoku Monogatari Edo Honten



Location: Chuo ku, Tokyo
Completion: 2014
Total floor area: 330m²

2015 DSA Design Award

Takara 18 building



Location: Nagoya city, Aichi
Completion: 2019
Total floor area: 5,361m²

Hotel

remm plus GINZA



Location: Chuo ku, Tokyo
Completion: 2019
Total floor area: 8,432m²

CROSS HOTEL OSAKA



Location: Osaka city, Osaka
Completion: 2007
Total floor area: 9,657m²

Sanko Golf Club Sakakibara Onsen Course Club House Hotel



Location: Tsu city, Mie
Completion: 2018
Total floor area: 8,064m²

Training

Suntory Training Center Yume Tamago



Location: Kawasaki city, Kanagawa
Completion: 2005年
Total floor area: 5,992m²

2007 AIJ Selected Architectural Designs

Guest House

CYPRESS Guest House



Location: Tanba city, Hyogo
Completion: 2015
Total floor area: 722m²

Architectural design

Solution × Design

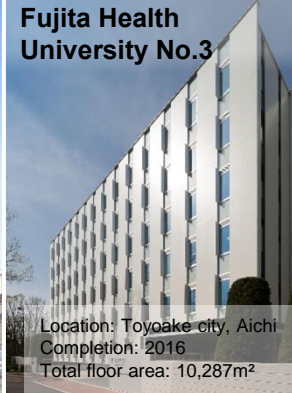
Education

TSUJI Culinary Institute, TSUJI Institute of Patisserie / Ecole TSUJI Osaka



Location: Osaka city, Osaka
Completion: 2015
Total floor area: 10,466m² / 3,031m²

Fujita Health University No.3



Location: Toyoake city, Aichi
Completion: 2016
Total floor area: 10,287m²

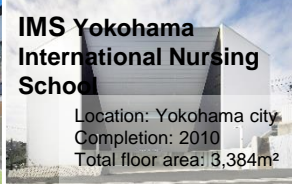
Angel Kindergarten



2013 JIA Architects of the Year

Location: Iyo gun, Ehime
Completion: 2012
Total floor area: 3,869m²

IMS Yokohama International Nursing School



Location: Yokohama city
Completion: 2010
Total floor area: 3,384m²

Culture/ Sports

FUJIYAMA MUSEUM



Location: Fujiyoshida city, Yamanashi
Completion: 2003
Total floor area: 2,460m²

Kikkoman Goyogura



2011 Good Design Award
2011 JIA Architects of the Year

Location: Noda city, Chiba
Completion: 2011
Total floor area: 469m²

Ishiuchi Maruyama Resort Center



2019 Kukan Design Award (Longlist)

Location: Minamiuonuma city, Nigata
Completion: 2018
Total floor area: 933m²

Hospital/ Welfare

Fujita Health University Okazaki Medical Center



Location: Okazaki city, Aichi
Completion: 2020
Total floor area: 37,673m²
Photographer: Kenya Chiba

Fujita Health University Hospital B building



Location: Toyoake city, Aichi
Completion: 2017
Total floor area: 31,776m²

Fujita Health University Nanakuri Memorial Hospital



Location: Tsu city, Mie
Completion: 2017年
Total floor area: 879m²

Fujita Health University Bantane Hospital



Location: Nagoya
Completion: 2016

ARIA Futakotamagawa



Location: Setagaya ku, Tokyo
Completion: 2007
Total floor area: 2,039m²

IMS Memorial Hospital



Location: Itabashi ku, Tokyo
Completion: 2004
Total floor area: 3,046m²

Nihonbashi 2 chome Project

Preservation and utilization of important cultural properties / Investing in the future of the city



2020 Good Design Award Best 100
61th BCS Prize
JIA Architects of the Year 2020
31st BELCA Award 2021
2021 Cityscape Grand Prize (Urban space design)
AIA Japan Design Award (Shortlisted Project 2021)
47th Tokyo Architecture Award

Location: Chuo ku, Tokyo
Completion: 2018
Total floor area: 77,977 m²

Sapporo S2 W3 SW district Project

The first shopping center in Sapporo with residential floors and direct access to the subway system



Location: Sapporo city, Hokkaido
Completion: 2023
Total floor area: 43,566 m²

Suehiromachi 1 chome Project

Revitalizing the area around JR Oita Station



Location: Oita city, Oita
To be completed: 2026
Phase: Detail design

Binh Duong SORA Area C19 Project

Urban development project in Binh Duong Province



Location: Binh Duong, Vietnam
Completion: 2023年
Total floor area: Approx. 21,500m²

Starlake Urban Complex Project

Complex development of high-quality shopping center and high-grade offices



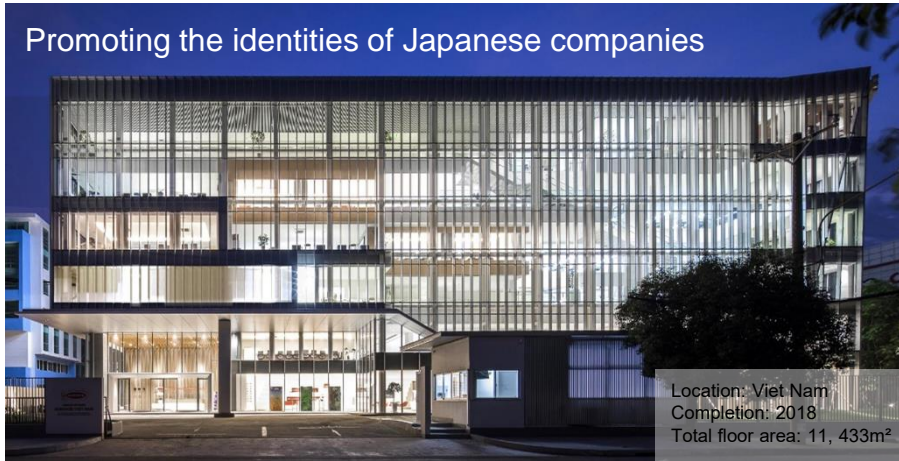
Location: Hanoi, Vietnam
Schematic Design completed: 2021
Phase: Basic design

Vietnam

Acecook Vietnam Head Office

| Office

Promoting the identities of Japanese companies



Toyota Motor Vietnam

TOYOTA | Dining Hall



Saigon Centre

SAIGONCENTRE | Commercial



PLANTEC ARCHITECTS COMPANY LIMITED

Ho Chi Minh City Office

Founded : October 2013
Employees : 22 members

Hanoi Office

Founded : November 2014
Employees : 3 members

Thailand

NSSPT Office

| Office

Strengthening the branding of Japanese company through product marketing



Associs International

| Education



Thai Takeda Lace

| Office



PLANTEC ARCHITECTS LTD.

Bangkok Office

Founded : April 2012
Employees : 16 members

* Employees : as of February 2024

Founded	April 11, 1985
Established	December 1, 2020 (Business started on June 1, 2021)
Capital	30,000,000 JPY
Business Activities	<ol style="list-style-type: none"> 1. Consulting for urban planning 2. Architectural design, supervisory work and construction 3. Project management 4. Construction management 5. Facility management 6. Interior design 7. Consulting for facility planning 8. Import, export and sales of architecture material, interior furnishing, lighting fixture and kitchen equipment 9. Sales transaction, leasing, intermediary and management of real estate 10. Planning, development, design, production and management of digital contents 11. Planning and management of events and exhibitions 12. Other ancillary business related to the foregoing items

Board Members	President	Naoyuki Koyama	
	Director	Noboru Kishida	
	Director	Katsuaki Watanabe	
	Auditor	Koichi Uehira	
	Principal Designer	Kazuhiro Aihara	Hideyuki Yokoya
	Executive Advisor	Hideo Osawa	Akimitsu Takashima
		Katsumi Kuwabara	
	Senior Executive Officer	Tomohiko Aoyagi	Asako Kondoh
		Hideki Kasahara	Fumihiko Nishitani
		Hiroaki Kiriyama	
	Executive Officer	Masato Aoki	Hiroshi Shimomura
		Mitsuru Idoi	Akio Chatani
		Yasuyuki Ogawa	Kiyoshi Tsuchiya
		Yuichi Kaneko	Hiroyuki Tsurumi
	Seiji Kuwabara	Jiro Miyata	
	Ryota Shimizu	Asako Wakuta	

Locations	Tokyo Office	6F Kioicho Park Bldg., 3-6 Kioi-cho, Chiyoda-ku, Tokyo, 102-0094, Japan TEL +81-3-3237-6857
	Osaka Office	2F Nikken Bldg., 2-1-9 Itachibori, Nishi-ku, Osaka, 550-0012, Japan TEL +81-6-6535-8120
	Nagoya Office	10F POLA Nagoya B-bldg. , 2-9-26 Sakae, Naka-ku, Nagoya, Aichi, 460-0008, Japan TEL +81-52-855-3177
	Sendai Office	1F 3-10-11 Chuo, Aoba-ku, Sendai, Miyagi, 980-0021, Japan
	Fukuoka Office	8F KDX Hakata Minami Bldg., 1-3-11 Hakataeki-minami, Hakata-ku, Fukuoka, 812-0016, Japan TEL +81-92-981-2088
	HCMC Office (PLANTEC ARCHITECTS COMPANY LIMITED)	#905, Zen Plaza, 54-56 Nguyen Trai, District 1, Ho Chi Minh City, Vietnam Tel+84-28-3925-5842 Fax+84-28-3925-5843
	Hanoi Office (PLANTEC ARCHITECTS COMPANY LIMITED)	#410, Corner Stone Building, 16 Phan Chu Trinh Street, Hoan Kiem District, Hanoi, Vietnam Tel+84-24-3939-2440
	Bangkok Office (PLANTEC ARCHITECTS LTD.)	Sathorn Square Office Tower, unit 1907, 19th Floor, 98 North Sathorn Road, Silom Bangrak, Bangkok 10500, Thailand Tel+66-2-108-1228 Fax+66-2-108-1282

Employees Japan 195, Vietnam 25, Thailand 16 (as of February 2024)

Registered First-class registered architect office Tokyo (No.64409) / Osaka (No. 26233)
ZEB (Net Zero Energy Building) Planner ZEB2021P-00044-PC

Main business partners of major projects from the past and those undertaken over the last two years (in alphabetical order)



Office

Angelo, Gordon
 AS ONE Corporation
 Astellas Pharma Inc.
 DAI-DAN CO., LTD.
 Daiwa Office Investment Corporation
 JR West Real Estate & Development Company
 MIKUNI co.,Ltd.
 N.E. CHEMCAT CORPORATION
 Net One Systems Co., Ltd.
 NTT Urban Development Corporation
 Takamatsu Construction Group Co., Ltd.
 WEST JAPAN JR BUS COMPANY

Factory

Aoyama Seisakusho Co., Ltd.
 ASAHI WOODTEC CORPORATION
 DAIWA HOUSE INDUSTRY CO., LTD.
 KCM Corporation
 NSK-Warner K.K.
 ORIENTAL MOTOR CO., LTD.
 Panasonic Energy Co., Ltd.
 Shinpo Co., Ltd.

Commercial

HANSHIN ELECTRIC RAILWAY CO.,LTD.
 JR West Urban Development Co., Ltd.
 Kobe Future City Co.,Ltd.
 kumoji Development Co.,Ltd. Corporation
 Takashimaya Company, Limited
 Toshin Development Co., Ltd.

Transportation

Tokyo Monorail Co., Ltd.

Laboratory

Calbee, Inc.
 Furuya Metal Co.,Ltd.
 Nitto Denko Corporation
 Okuma Corporation
 YASKAWA Electric Corporation

Education

Angel Academy, Inc.
 NUC Osaka University

Medical

Fujita Academy
 Medical Corporation Keiseikai
 Sakurabashi Watanabe Hospital

Hotel

Belluna Co., Ltd.
 Fortress Investment Group (Japan) GK
 FUJI KYUKO CO., LTD
 MORI TRUST CO., LTD.

Residential

DAIKYO INCORPORATED
 World iCity Co., Ltd.

Culture / Recreation

TMG Bureau of Citizens, Culture and Sports
 TMG Bureau of Finance
 Tokyo Metropolitan Foundation for History and Culture

Planning / FS

AEON MALL Co., Ltd.
 Chuo-Nittochi Group Co., Ltd.
 Daiwa Securities Realty Co.Ltd.
 EXEO Group, Inc.
 Hankyu Sekkei Consultant
 KAGOYA Holdings inc.
 Kikkoman Corporation
 Nipro Pharma Corporation
 Rikkyo Educational Corporation
 SOTETSU Urban Creates co.,LTD
 Tokyo Tatemono Co., Ltd.
 Yasuda Real Estate Co.,Ltd.

Supervision

Hankyu Hanshin Properties Corp.
 ITOCHU Property Development, Ltd.
 Kintetsu Real Estate Co.,Ltd.
 TOYOTA SMILE LIFE INC.

Seismic retrofitting and diagnosis

Bushu Pharmaceuticals Ltd.
 Chugai Pharmaceutical Co., Ltd.
 CMIC CMO Co., Ltd.
 Credit Saison Co., Ltd.
 J-OIL MILLS, INC.
 LIXIL Corporation
 Maruwa Electronic & Chemistry Co., Ltd.
 Ryosan Company,Limited



Consulting

Fukuoka Financial Group, Inc.
 Kawakin Core-Tech Co.,Ltd.
 Nichirei Corporation
 Starbucks Corporation
 Sumitomo Riko Company Limited
 Toyota Tsusho Corporation
 YANASE & CO.,LTD.

PM / CM

Kotobukiya Fronte Co., Ltd.
 Sapporo Breweries Limited
 Takeda Pharmaceutical Company Limited
 TOKYU LAND CORPORATION
 Toyo Tire Corporation

Office Reorganization

Takagi Co.,Ltd.

BPO

Hosei University
 JICA

Real estate brokerage

GLP Japan Inc.
 The Bank of Iwate, Ltd.



Content creation

AMADA CO., LTD.
 ENEOS Corporation
 Hanamura co.,Ltd.
 JAPAN POST TRANSPORT Co.,Ltd.
 Konoshima Chemical Co.,Ltd.
 MODEC, Inc.
 Nomura Real Estate Development Co., Ltd.
 Primearth EV Energy Co., Ltd.
 Prologis, Inc.
 SUMITOMO CONSTRUCTION MACHINERY CO., LTD.
 Yamato Scientific Co., Ltd.
 Yorozu Corporation

Equipment maintenance

DOME Corporation
 Kanazawa Terminal Development Co., Ltd.
 Kao Corporation
 QTnet, Inc.
 STANLEY ELECTRIC CO., LTD.
 The Iyo Bank, Ltd.

Main Clients (Works)



Plantec has been registered as a ZEB planner since December 24, 2021.



PLANTEC

© 2022-2024 Plantec, Inc.